



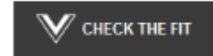
ACTIONWEAR SASKATOON INC.

114 Melville Street, Saskatoon, SK S7J 0R1

Virtusize

Actionwear has recently launched an online sizing tool called Virtusize. This tool enables a person to enter measurements from garments they already own and use this information to find the matching Actionwear garment size.

The sizing tool is accessed by clicking on the check the fit button which is located on each garment product page. There are onscreen instructions on how to use the tool as well as other online help. Actionwear has also put together a guideline pdf. Please contact Actionwear Customer Service (sales@actionwear.ca) to request a copy, if needed.



<http://www.virtusize.com/site/how-it-works>

Actionwear Size Chart Information

If you are unsure what size to order, please provide the following information in the measurement guide.

- Accurate measurements in imperial units -inches, pounds, etc.,
- Height, weight, chest, waist and inseam are always required, and
- Fit preferences

Actionwear's experienced customer service staff will use your measurements and fit preference to determine the appropriate Actionwear size for the styles you require.

Note: These measurements are only used as a guideline to help us determine the best possible fit from our standard size range. These garments are not custom made.

Custom made garments can be produced for people that do not fit into garments in our stock size range. In these cases, Actionwear will provide a price quotation along with details of the custom size that will be made.

Custom production garments cannot be exchanged or returned.

Sincerely,

Actionwear Customer Service



ACTIONWEAR SASKATOON INC.

114 Melville Street, Saskatoon, SK S7J 0R1

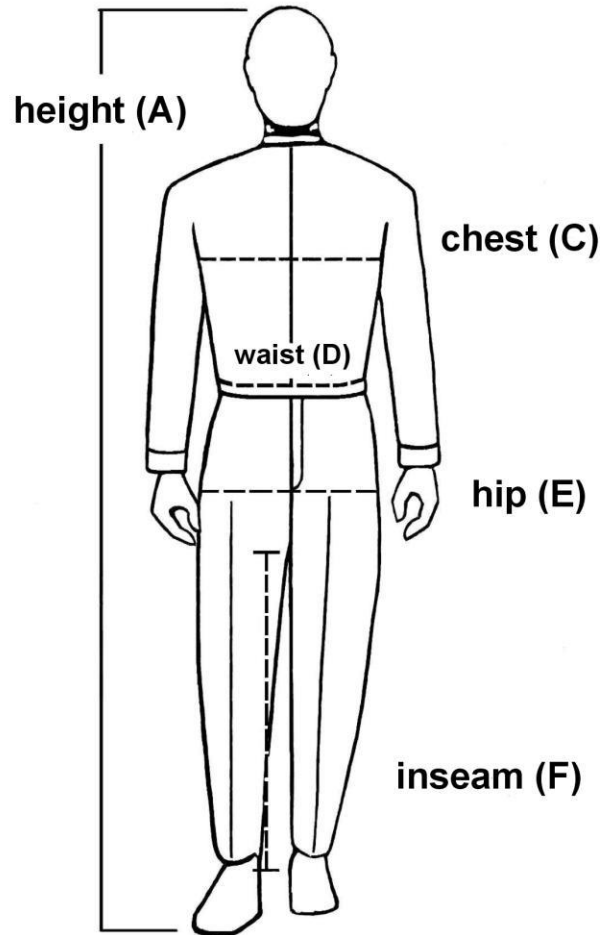
Size Chart Index

Note: Please check style's product web page to verify size ranged used.

Page #	Description
1 to 3	Measurement guide
4	Numeric Sizes: Unlined coveralls, Bomber Jackets, Parkas, and Shop Coats
5	Numeric Sizes: Extended Size Range* for 8310 Unlined Deluxe Coverall (*For designated colours)
6	Numeric Sizes: Ladies Fit Guideline for Unlined Deluxe Coverall
7	Alpha-Numeric Sizes: Insulated Coveralls, Bib Pants, 3 in 1 Jackets, and Fleece Jackets
8	Alpha-Numeric Sizes: Shirts Waist Sizes: Pants
9	Alpha-Numeric Sizes: Fleece Sweat Pant
10	Alpha-Numeric Arctic Sizes: Actionwear Arctic Survival System Garments



Measurement Guideline Instructions



Height (A)	Measurement from top of head to floor
Weight (B)	
Chest (C)	Circumference of chest just below under arm
Waist (D)	Circumference of waist where you normally wear your pants Include a belly measurement if applicable and larger than waist
Hip (E)	Circumference measurement 8" below waist or fullest part of hip
Inseam (F)	Measurement from crotch to 1" above floor
(G)	Any measurement or comment you feel would be applicable

Please provide the following measurements in inches and pounds accordingly.

Actual measurements must be provided to ensure proper fit. Please do not exaggerate measurements in any way.

Please use the comments page for any additional information that would aid in sizing.

Thank you,

Actionwear Saskatoon Inc.



ACTIONWEAR SASKATOON INC.
 114 Melville Street, Saskatoon, SK S7J 0R1

Measurement Form

NAME	Height (A)	Weight (B)	Chest (C)	Waist (D)	Hip (E)	Inseam (F)	Other (G)	Fit Preference (circle choices)			Size (office use)	
								BODY	REG	LONG		SHORT
								BODY	REG	LONG	SHORT	
								LEG	REG	LONG	SHORT	
								FIT	REG	LOOSE	TIGHT	
								BODY	REG	LONG	SHORT	
								LEG	REG	LONG	SHORT	
								FIT	REG	LOOSE	TIGHT	
								BODY	REG	LONG	SHORT	
								LEG	REG	LONG	SHORT	
								FIT	REG	LOOSE	TIGHT	
								BODY	REG	LONG	SHORT	
								LEG	REG	LONG	SHORT	
								FIT	REG	LOOSE	TIGHT	
								BODY	REG	LONG	SHORT	
								LEG	REG	LONG	SHORT	
								FIT	REG	LOOSE	TIGHT	



ACTIONWEAR SASKATOON INC.
114 Melville Street, Saskatoon, SK S7J 0R1

Measurement Comments

NAME	Comments



Numeric Sizes:

Actionwear’s numeric sizes (40, 42, 44, etc.) have two inch increments between sizes.

Numeric Size Chart: Unlined Coveralls, Bomber Jackets, Parkas, and Shop Coats

SIZE	HEIGHT (FEET, INCHES)		WEIGHT (POUNDS)		CHEST
	FROM	TO	FROM	TO	
32	5' 3"	5' 4"	100	115	32
34	5' 4"	5' 5"	116	130	34
36	5' 5"	5' 6"	131	149	36
38	5' 6"	5' 7"	150	164	38
40	5' 8"	5' 10"	165	179	40
42	5' 10"	6'	180	194	42
44	5' 10"	6'	195	209	44
46	5' 10"	6'	210	224	46
48	5' 10"	6'	225	239	48
50	5' 10"	6'	240	254	50
52	5' 10"	6'	255	264	52
54	5' 10"	6'	265	274	54
56	5' 10"	6'	275	284	56
58	5' 10"	6'	285	299	58
60	5' 10"	6'	300	315	60

For sizes 42 and up

Height less than 5' 8" – order SHORT*

Height from 6' 1" to 6' 3" – order TALL Height

from 6' 4" to 6' 6" – order EXTRA TALL*

Explanation of Size Differences

Short – shorter than regular by 1 ½ inches arms, 1 ½ inches legs, and 1 ½ inches body

Tall – longer than regular by 1 ½ inches arms, 1 ½ inches legs, and 1 ½ inches body

Extra Tall – longer than regular by 3 inches arms, 3 inches legs, and 3 inches body

***Note: SHORT and EXTRA TALL sizes are not available from stock for all styles. Please check for stock availability.**



Numeric Sizing Chart: Extended Size Range for 8310 Unlined Deluxe Coverall – Nomex® IIIA

Actionwear has inventory of style 8310 Unlined Deluxe 6 oz Nomex® IIIA coverall in royal blue from size 32 to 68 regular, 32 to 68 tall, 32 to 52 short, and 40 to 60 extra tall.

With our extensive stock size range offering sixty size options and our large inventory, Actionwear is able to fill orders immediately.

SIZE	HEIGHT (FEET, INCHES)		WEIGHT (POUNDS)		CHEST
	FROM	TO	FROM	TO	
32	5' 3"	5' 4"	100	115	32
34	5' 4"	5' 5"	116	130	34
36	5' 5"	5' 6"	131	149	36
38	5' 6"	5' 7"	150	164	38
40	5' 8"	5' 10"	165	179	40
42	5' 10"	6'	180	194	42
44	5' 10"	6'	195	209	44
46	5' 10"	6'	210	224	46
48	5' 10"	6'	225	239	48
50	5' 10"	6'	240	254	50
52	5' 10"	6'	255	264	52
54	5' 10"	6'	265	274	54
56	5' 10"	6'	275	284	56
58	5' 10"	6'	285	299	58
60	5' 10"	6'	300	315	60
62	5' 10"	6'	316	330	62
64	5' 10"	6'	331	345	64
66	5' 10"	6'	346	360	66
68	5' 10"	6'	361	375	68

NOMEX® is a registered trademark of E.I. du Pont de Nemours and Company.

For sizes 42 and up

Height less than 5' 8" – order SHORT

Height from 6' 1" to 6' 3" – order TALL

Height from 6' 4" to 6' 5" – order EXTRA TALL

Explanation of Size Differences

Short – shorter than regular by 1 ½ inches arms, 1 ½ inches legs, and 1 ½ inches body

Tall – longer than regular by 1 ½ inches arms, 1 ½ inches legs, and 1 ½ inches body

Extra Tall – longer than regular by 3 inches arms, 3 inches legs, and 3 inches body



Ladies Sizing Guide for Style 8310 Unlined Deluxe Coverall – Nomex® IIIA

Actionwear can outfit most people from inventory because of the variety of stock size options in Actionwear’s style 8310 Royal Blue size range. There are fifteen stock size options available from size 32 to 40 including regular, short, and tall.

HEIGHT (FEET, INCHES)	APPROXIMATE WEIGHT	TIGHT FIT SIZE	LOOSE FIT SIZE
5' 3"	110	32	
5' 4"	125	34	36
5' 5"	140	36	38S
5' 6"	155	38	40S
5' 7"	170	40	42S
5' 8"	185	42	

NOMEX® is a registered trademark of E.I. du Pont de Nemours and Company.



Alpha-Numeric Sizes:

Actionwear’s alpha-numeric sizes (L, XL, 2XL, etc.) have three inch increments between sizes compared to many other manufacturers that typically have four inch increments between sizes.
 Actionwear provides a broader range of sizes to ensure garments fit better

Alpha-Numeric Sizing Chart: Bib Pants, Insulated Coveralls, and Fleece Jackets

SIZE	HEIGHT (FEET, INCHES)		WEIGHT (POUNDS)		CHEST
	FROM	TO	FROM	TO	
XS	5' 6"	5' 8"	115	135	34
S	5' 7"	5' 9"	136	155	36
M	5' 9"	5' 10"	156	175	39
L	5' 10"	6'	176	195	42
XL	5' 10"	6'	196	215	45
2XL	5' 10"	6'	216	235	48
3XL	5' 10"	6'	236	255	51
4XL	5' 10"	6'	256	275	54
5XL	5' 10"	6'	276	295	57
6XL	5' 10"	6'	296	315	60
7XL	5' 10"	6'	316	335	63
8XL	5' 10"	6'	336	355	66

For sizes Large and up

Height less than 5' 8" – order SHORT*

Height from 6' 1" to 6' 3" – order TALL

Height from 6' 4" to 6' 6" – order EXTRA TALL*

Explanation of Size Differences

Short – shorter than regular by 1 ½ inches arms, 1 ½ inches legs, and 1 ½ inches body

Tall – longer than regular by 1 ½ inches arms, 1 ½ inches legs, and 1 ½ inches body

Extra Tall – longer than regular by 3 inches arms, 3 inches legs, and 3 inches body

***Note: SHORT and EXTRA TALL sizes are not available from stock for all styles. Please check for stock availability.**



Alpha-Numeric Sizing Chart: Shirt

SIZE	HEIGHT (FEET, INCHES)			WEIGHT (POUNDS)		CHEST
	NECK	FROM	TO	FROM	TO	
XS	15	5' 6"	5' 8"	115	135	34
S	15 ½	5' 7"	5' 9"	136	156	36
M	16	5' 9"	5' 10"	157	177	39
L	16 ½	5' 10"	6'	178	198	42
XL	17	5' 10"	6'	199	219	45
2XL	17 ½	5' 10"	6'	220	240	48
3XL	18	5' 10"	6'	241	261	51
4XL	18 ½	5' 10"	6'	262	282	54

For sizes Large and up

Height less than 5' 8" – order SHORT*

Height from 6' 1" to 6' 3" – order TALL

Height from 6' 4" to 6' 6" – order EXTRA TALL*

Explanation of Size Differences

Short – shorter than regular by 1 ½ inches arms, 1 ½ inches legs, and 1 ½ inches body

Tall – longer than regular by 1 ½ inches arms, 1 ½ inches legs, and 1 ½ inches body

Extra Tall – longer than regular by 3 inches arms, 3 inches legs, and 3 inches body

***Note: SHORT and EXTRA TALL sizes are not available from stock for all styles. Please check for stock availability.**

Waist Sizes: Pant

Actionwear pants are stocked in even waist sizes. The actual waist circumference of the pant equals the stated size. For example, a size 34 waist pant will actually measure 34 inches in circumference.

Because other pant manufactures may have different amounts of "fit room", please use the following procedure to determine the proper waist size to order:

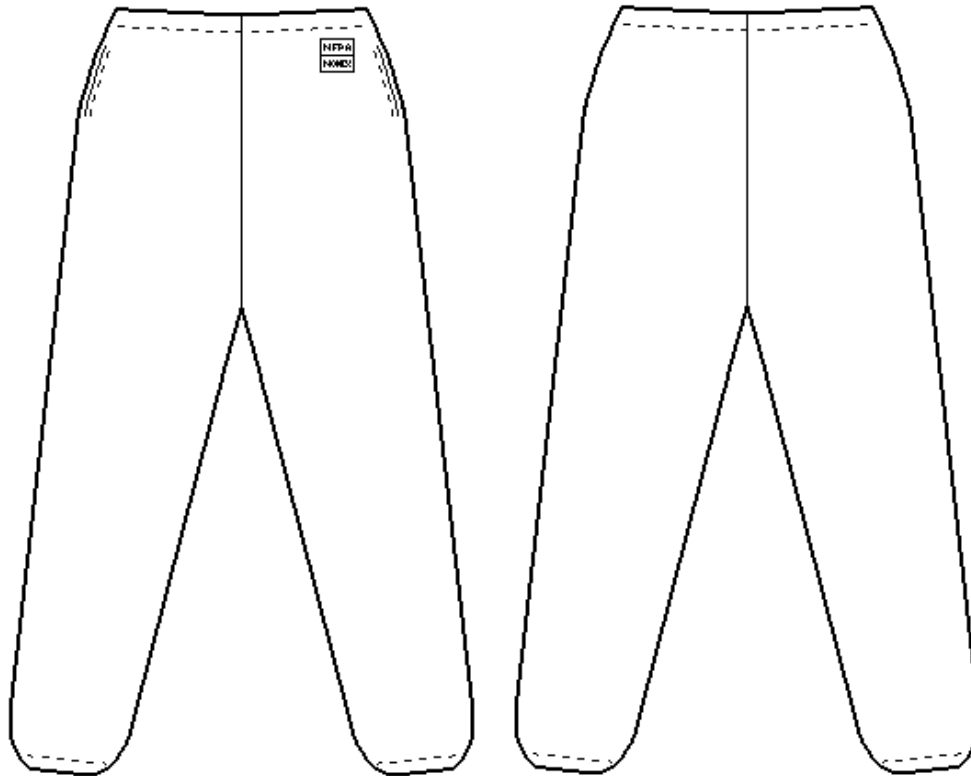
1. Measure the actual waist circumference from a pair of your existing pants that fit well (from button to button hole).
2. Choose the appropriate Actionwear waist size that equals or slightly exceeds this measurement.



Alpha-Numeric Sizing Chart: Fleece Sweat Pant

Size	Fits Waist Sizes	Actual waist Circumference of pant (unstretched)	Inseam	Outseam
S	26 – 34	28	29	41
M	28 – 36	30	30	42
L	30 – 40	32	30	42
XL	32 – 42	34	31 ½	44
2XL	34 – 44	36	32	44
3XL	36 – 46	38	32	44 ½
4XL	38 – 48	40	32 ½	45 ½

Note: Sweat pants have a drawstring around the waist.





Alpha-Numeric Arctic Sizes: Actionwear Arctic Survival System garments

Bib Pant and Liner Jacket

The Actionwear Alpha-Numeric General Sizing Chart below can be used to size the following Arctic garments with no adjustments required: Arctic Bib Pant (13ABM) and Liner Jacket (13AJM).

Parka

The Arctic Parka (13APM) was designed for use in Arctic winter conditions in places like Prudhoe Bay, Alaska, Inuvik, NWT or Siberia. In these harsh environments, the Arctic Parka is normally worn over top of the Liner Jacket and, therefore, they are oversized to allow room for the Liner Jacket.

The temperature rating for the Parka/Liner/Bib combination – 70° F.

Sizing Examples

If the Arctic Parka is to be worn over the Arctic Liner Jacket, order the size as indicated on the size chart.

Example: Height = 5' 11", Weight = 210 pounds – order size XL

If the Arctic Parka is to be worn over a heavy sweater or regular jacket, order one size down from the size indicated on the size chart.

Example: Height = 5' 11", Weight = 210 pounds – order size L

If the Arctic Parka is to be worn over a regular shirt and/or sweatshirt, order two sizes down from the size indicated on the size chart.

Example: Height = 5' 11", Weight = 210 pounds – order size M

SIZING CHART – ALPHA-NUMERIC SIZES

SIZE	HEIGHT (FEET, INCHES)		WEIGHT (POUNDS)		CHEST
	FROM	TO	FROM	TO	
XS	5' 6"	5' 8"	115	135	34
S	5' 7"	5' 9"	136	155	36
M	5' 9"	5' 10"	156	175	39
L	5' 10"	6'	176	195	42
XL	5' 10"	6'	196	215	45
2XL	5' 10"	6'	216	235	48
3XL	5' 10"	6'	236	255	51
4XL	5' 10"	6'	256	275	54